

# CFE-Replacement LFP S Pro Battery



# Advantages

1. Support 4 batteries connected in parallel.
2. Support external connections in series with voltage up to 51.2V.
3. Active balancing function between batteries, true parallel with RS485 communication.
4. Quick connection and insulation protection.
5. High-resolution, low-power OLED shows battery power & voltage, soft switch design.
6. Stainless steel handles, high durability, easy to carry, and guarantee 3000 fatigue tests.
7. Rugged stainless steel body with wonderful looking and durable.

## Self-developed BMS

Eight-fold safety protection, safe and reliable



Over Charge Protection



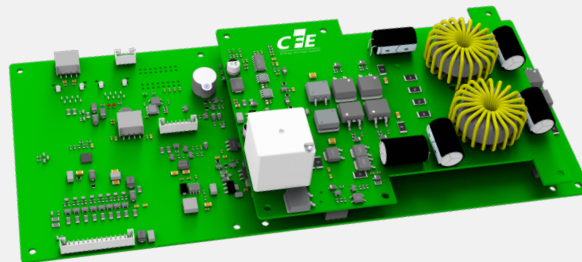
Over Discharge Protection



Short Circuit protection



Over Load protection



Overheating protection



Cryogenic protection



Over Current Protection



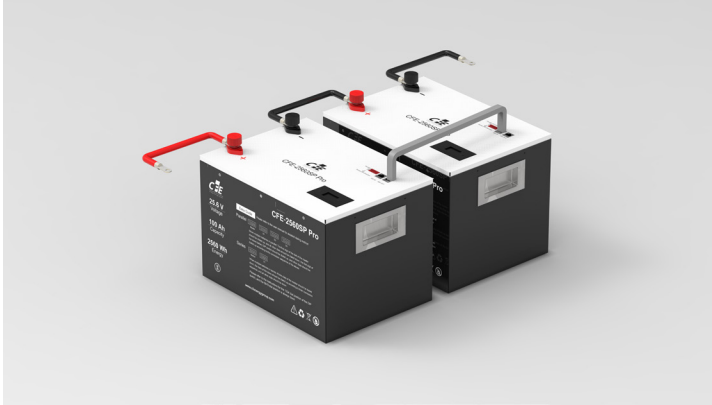
Over Voltage protection

CFE S Pro batteries are based on Lithium Iron Phosphate technology (LiFePO<sub>4</sub>), the safest Lithium technology available today. On top of that our bespoke casing and self-developed BMS System further increase safety and durability.

Compared to conventional lead-acid batteries, the lithium battery offers an enormous weight and space saving. It is very efficient, has extremely high performances and is maintenance free.

- Low weight
- Low Maintenance
- Low self-discharge
- High capacity
- Safest Lithium Technology
- High cycle count

## Series



## Parallel



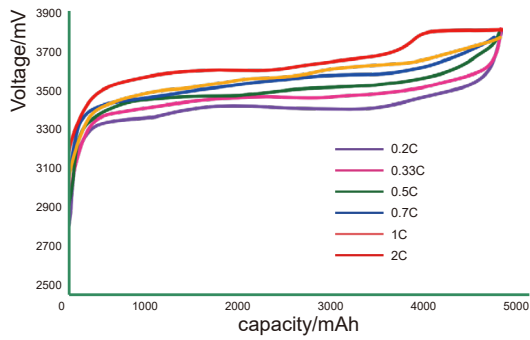
## Specifications

|  |  |
|--|--|
| Model  | CFE-2560SP Pro   |
| Nominal Voltage                                      | 25.6V  |
| Nominal Capacity @1C                                 | 100Ah  |
| Charge Voltage                                       | 29.2V  |
| Charge Current Max Continuous                        | 50A  |
| Discharge Current Max Continuous                     | 100A   |
| Discharge Voltage Minimum                            | 20.8V  |
| Pulse Current 5 Sec                                  | 125A   |
| Weight   | 22.9kgs±0.5kgs   |
| Dimensions L*W*H                                     | 360*260*250 mm   |
| Calendar Life & Performance Guarantee <sup>[1]</sup> | a. 3500 cycles or 5 years , whichever comes first<br>b. 1500 cycles or 2 years , whichever comes first |

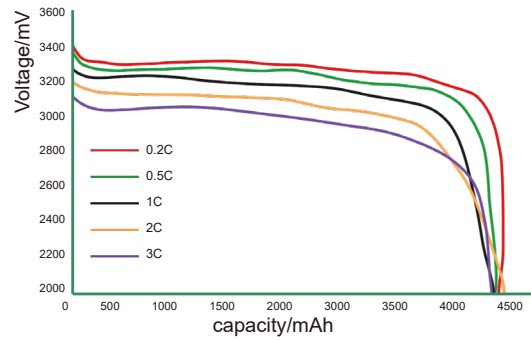
[1] Test conditions: 0.2C Charging/Discharging, @25°C, 80% DOD

## Environmental Requirements and Certifications

|                            |                            |
|----------------------------|----------------------------|
| Operating Temperature      | Charging:0°C to 45°C       |
|                            | Discharging :-20°C to 60°C |
| Storage Temperature        | 1 year : -20~25°C          |
|                            | 3 months : -20~45°C        |
|                            | 1 month : -20~60°C         |
| Relative Humidity (R H)    | 20~60 (No Condensed Water) |
| Safety Certificate         | CE( IEC 62040 ), MSDS      |
| Transportation Certificate | UN38.3                     |



Charging curve



Discharge curve

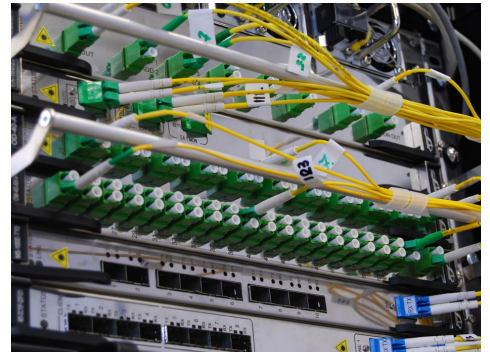
## Application



Home lighting



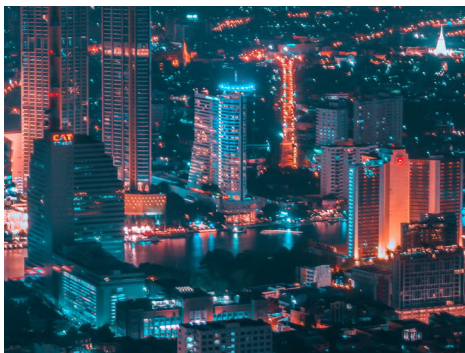
UPS



Telecom power



Photovoltaic integration



Power Systems



Emergency lighting



Power supply



Outdoor power bank



Instrument power



First-class power battery system supplier  
First-class supplier of energy storage and microgrid

CF Energy Co., Ltd.

Company Address:

Intelligent Manufacturing Base , Xianyang , Shaanxi , PRC .

Tel: (+86) 029-38367888

Web: [www.cfenergygroup.com](http://www.cfenergygroup.com)

E-mail: [sales@cfenergygroup.com](mailto:sales@cfenergygroup.com)