

Rosh Properties

PORTLAND ROAD, W11



- Three Bedrooms
- Three Terraces



- Roof Terrace
- Two Bathrooms



- Cinema room
- Two living Space

A beautiful Holland Park town house situated moments from the amenities of Holland Park Avenue & close to the beautiful Park. Featuring large entertainment spaces & two roof terraces. A designer finished style with mix of contemporary & rustic.

Rosh Properties



- Hard Bamboo wood flooring throughout
- Polished cement and designer wallpaper

- Built in sound system
- Energy saving solar heating system

Portland Road, W11

APPROX. GROSS INTERNAL FLOOR AREA 1758 SQFT / 163.32 SQM

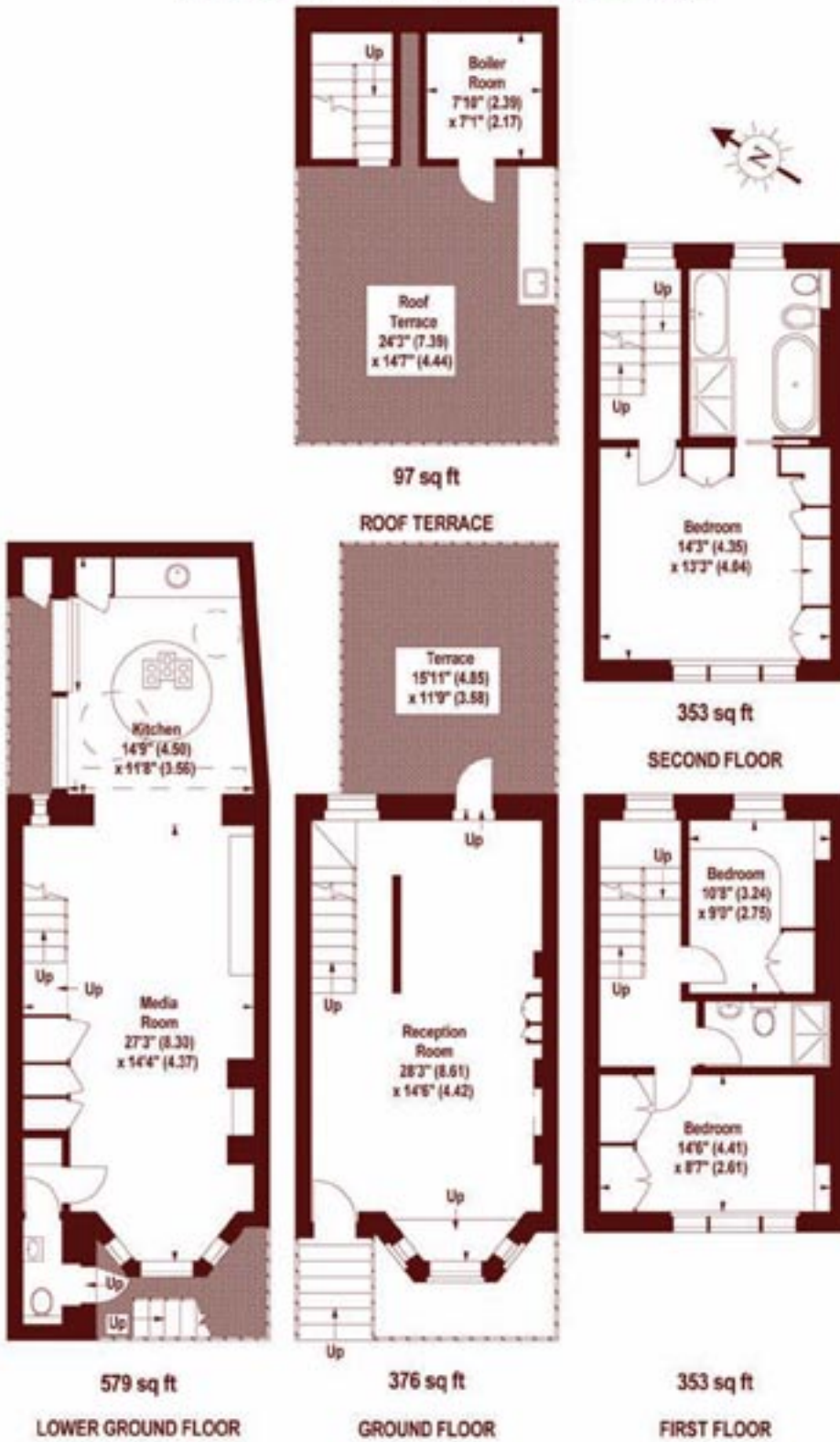


Illustration For Identification Purposes Only. Not To Scale
*Floorplan Drawn According To RICS Guidelines
Copyright of FeaturePRO

Portland Road, W11 London

Approximate Gross Internal Area.
1,758 SQFT / 163.32 SQM

Rosh Properties



Environmental Impact (CO₂) Rating

	Current	Potential
Very environmentally friendly - lower CO ₂ emissions		
(92 plus) A		
(81 - 91) B		
(69 - 80) C	76	76
(55 - 68) D		
(39 - 54) E		
(21 - 38) F		
(1 - 20) G		
Not environmentally friendly - higher CO ₂ emissions		
England & Wales	EU Directive 2002/91/EC	

Energy Efficiency Rating

	Current	Potential
Very energy efficient - lower running costs		
(92 plus) A		
(81 - 91) B	81	81
(69 - 80) C		
(55 - 68) D		
(39 - 54) E		
(21 - 28) F		
(1 - 20) G		
Not energy efficient - higher running costs		
England & Wales	EU Directive 2002/91/EC	