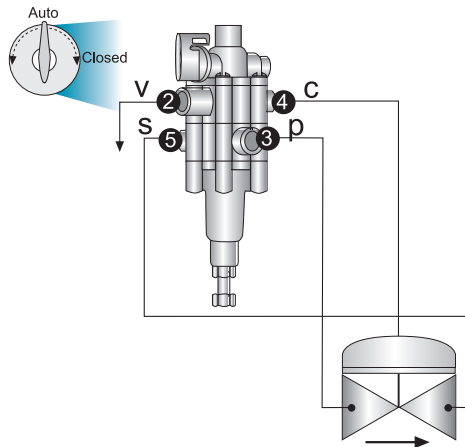


XR100

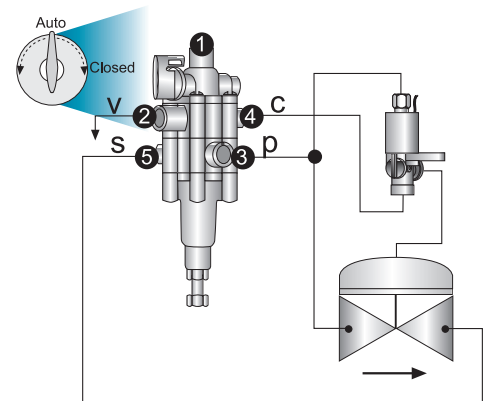
3 WAY P/R PILOT VALVE

* Built in Manual Override

PRESSURE REDUCING

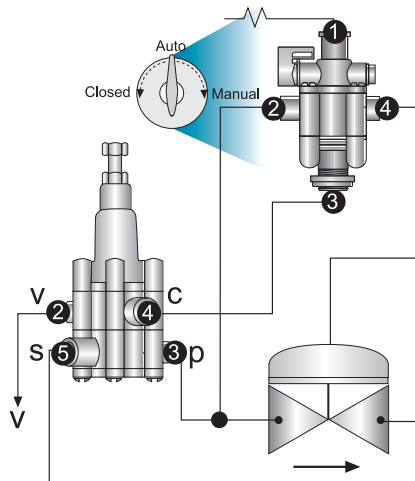


ELECTRICAL PRESSURE REDUCING



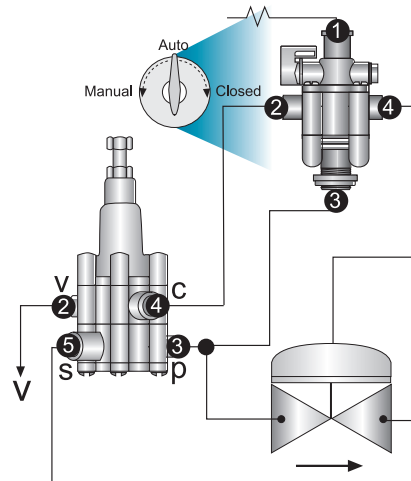
HYDRAULIC PRESSURE REDUCING

(Valve Position - N.C.)



HYDRAULIC PRESSURE REDUCING

(Valve Position - N.O.)



TECHNICAL DATA

Operating Pressure Range:	10 bar / 150 psi
End Connections:	Female Threaded 1/8" BSP
Standard Regulation Spring:	0.5-6.0 bar / 7-90 psi.
Manual Override:	Auto, Open, Closed